



STUDY AT THE KIELCE UNIVERSITY OF  
TECHNOLOGY  
GUIDE FOR NEW STUDENTS

Much useful information gathered in one place



# REASONS TO STUDY AT THE KIELCE UNIVERSITY OF TECHNOLOGY



The Kielce University of Technology is an interesting and students oriented institution, that provides up-to-date practical courses in a friendly atmosphere.

Our main aim is to develop the most desired by employee's qualifications for our students and guarantee as many job prospects as we can. Every day the University staff makes an effort to provide students with the newest technology, develop already gained skills, and incinerate internal passion for perfection.

To make the environment even more experienced, we care about international cooperation, that's why each year we host students and teachers from all over the world which gives many opportunities to transfer new possibilities and discover other cultures.

Although the Kielce University of Technology is an educational institution, we are convinced that students' life is not all about studying, therefore we created this guide to show some opportunities to spend free time here, in Kielce, and even further in Poland.

We care about our students, support them and try our best to make them feel comfortable at any time. It is our goal for students to enjoy their time and feel at home at the Kielce University of Technology.

Kielce is not one of the biggest cities in Poland, but it has a remarkably rich history, so worth discovering. In the region, there is a lot of beautiful green space, such as nature preserves, biking routes, swimming pools, ski lifts, and other sports facilities, all of those places are necessary once tired of studying or life routine.

Another advantage of Kielce is the location, which makes access to other Polish cities very easy. Moreover, the costs of living in Kielce are much lower than in other parts of Poland.

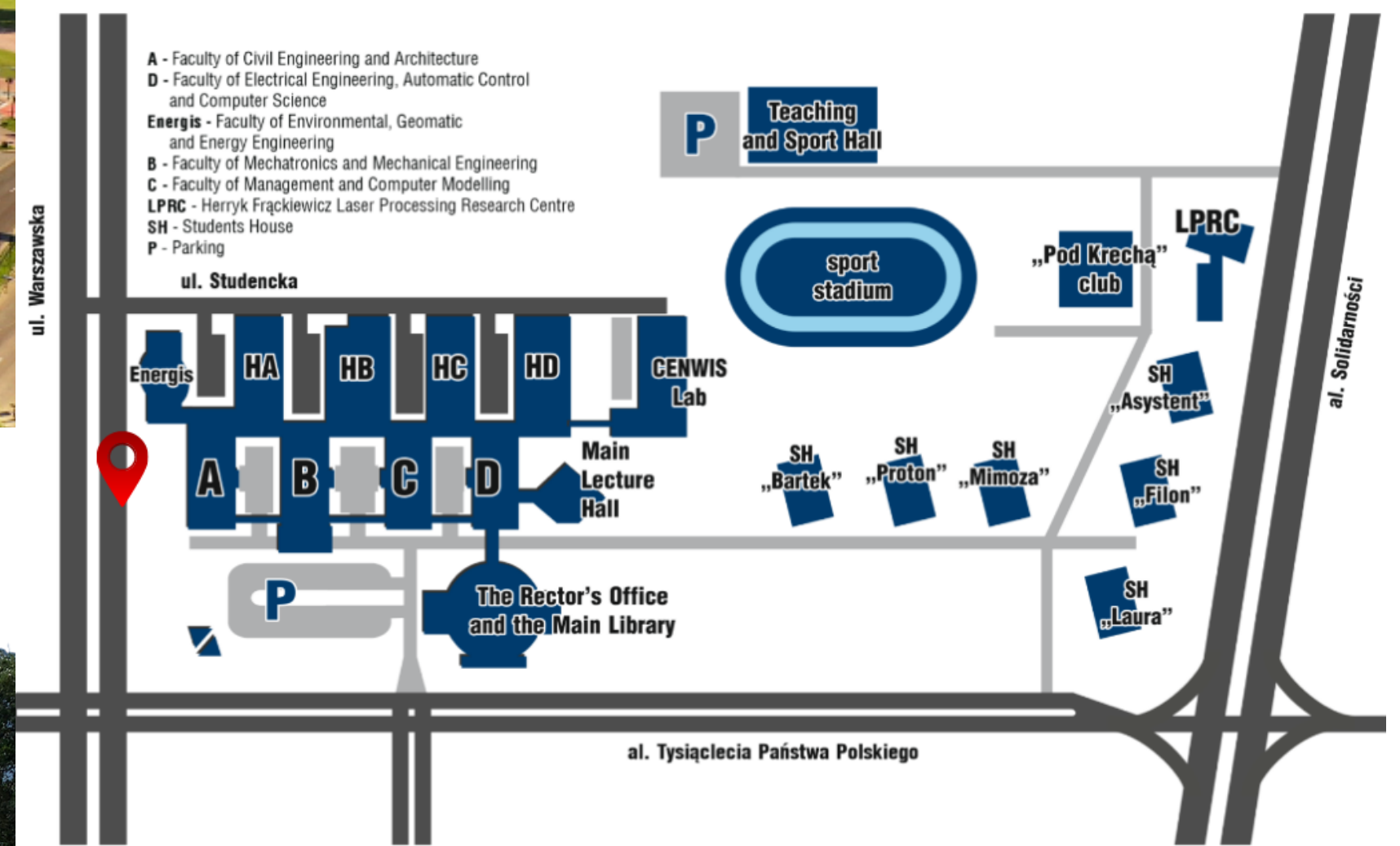
We hope this guide provides useful information for both candidates and students, and will encourage young people to study here.

# KIELCE UNIVERSITY OF TECHNOLOGY AND ITS ADVANTAGES FOR STUDENTS



Undoubtedly, one of the most significant advantages of KUT for international students is the compact campus. Our students can move around the University and its facilities without any obstacles. Classes are held in one place, with no need to travel to other faculty by bus or car.

## CAMPUS MAP



 WARSZAWSKA / POLITECHNIKA



There are 6 dormitories, all of them located about 2 minutes away of walking from the University (SH Bartek, SH Proton, SH Mimoza, SH Laura, SH Filon, SH Asystemt).

# KIELCE UNIVERSITY OF TECHNOLOGY AND ITS ADVANTAGES FOR STUDENTS

The Kielce University of Technology believes in a sound mind in a healthy body. That is why after classes (or during PE classes) our students can play at the University's stadium, take part in sports competitions or join the gym (located in SH Filon). There are annual open events to keep our students in shape and in competitive spirit.



# KIELCE UNIVERSITY OF TECHNOLOGY AND ITS ADVANTAGES FOR STUDENTS



We are aware that moving out to a foreign country is challenging, and that is why Department of International Cooperation organizes events for foreign students. The aims of those meetings are: to get to know each other, to be familiar with Polish traditions and cuisine, and also to explore the city and the neighborhood.

During each meeting, we host many international students willing to find out more about Ponad, Kielce and just to spend time together and socialize.

Mostly our students are invited to:

- Welcome day at the beginning of the academic year;
- An outgoing meeting to have some fun (bowling, billiard, etc.)
- Christmas meeting at the beginning of December;
- An outgoing winter event (skiing, ice skating, etc.);
- Orientation day at the beginning of summer semester for new Erasmus+ students;
- An outgoing spring event to explore the outstanding nature of Kielce and the neighbourhood



# FREE TIME ACTIVITIES IN KIELCE



Poland is well-known for its 4 seasons during the year. Most of the activities can be taken up all year long, although there are some activities dedicated to specific weather.

## All year-long activities:

- walking
- exploring nature
- exploring local heritage
- chilling in a cafe/ restaurant
- bowling, billard
- trampoline park
- oceanics

## Spring/ summer/ autumn activities:

- riding a bike
- go cart
- skydiving
- lake swimming
- sightseeing - castles, cathedrals,
- botanical garden
- rope park
- ziplining
- jurapark

## Winter activities:

- ice skating
- skiing
- winter outdoor swimming
- sleigh ride

# ALL YEAR-LONG ACTIVITIES IN KIELCE

- **walking**

As the campus is situated 10 minutes of walking from the city center, you can reach most of the worth-seeing places easily.

- **exploring nature and local heritage**

Kielce is a city located in the heart of one of the oldest mountains in Europe. You can find many interesting places in the city and in a very close neighborhood.

Nature reserves:

- the closest - Kadzielnia (al. Legionów, 25-202 Kielce)
- Wietrznia (ul. Daleszycka 21, 25-202 Kielce)
- Ślichowice (ul. Kazimierza Wielkiego, 25-633 Kielce)
- Karczówka (Rezerwat Przyrody Biesak-Białogon, 25-000 Kielce)
- Barcza (Rezerwat przyrody Barcza, 26-001 Barcza)

- **educational centres**

Leonardo Da Vinci Science Center (Podzamcze 45, 26-060 Podzamcze)  
Energy Science Centre (ul. Olszewskiego 6, 25-663 Kielce)

- **bowling, billard**

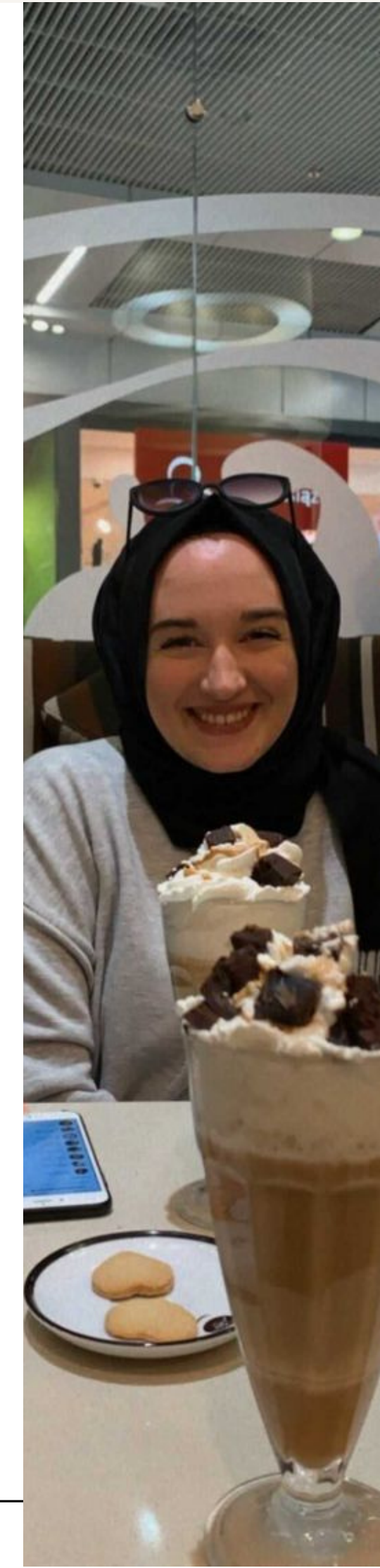
MK Bowling Kielce (ul. Świętokrzyska 20, 25-406 Kielce)

- **trampoline park**

Fly sky (ul. Skrajna 86b, 25-650 Kielce)

- **tennis, squash, badmington**

Jurajska-Plaza Sports Centre (ul. Jurajska 1, 25-640 Kielce)



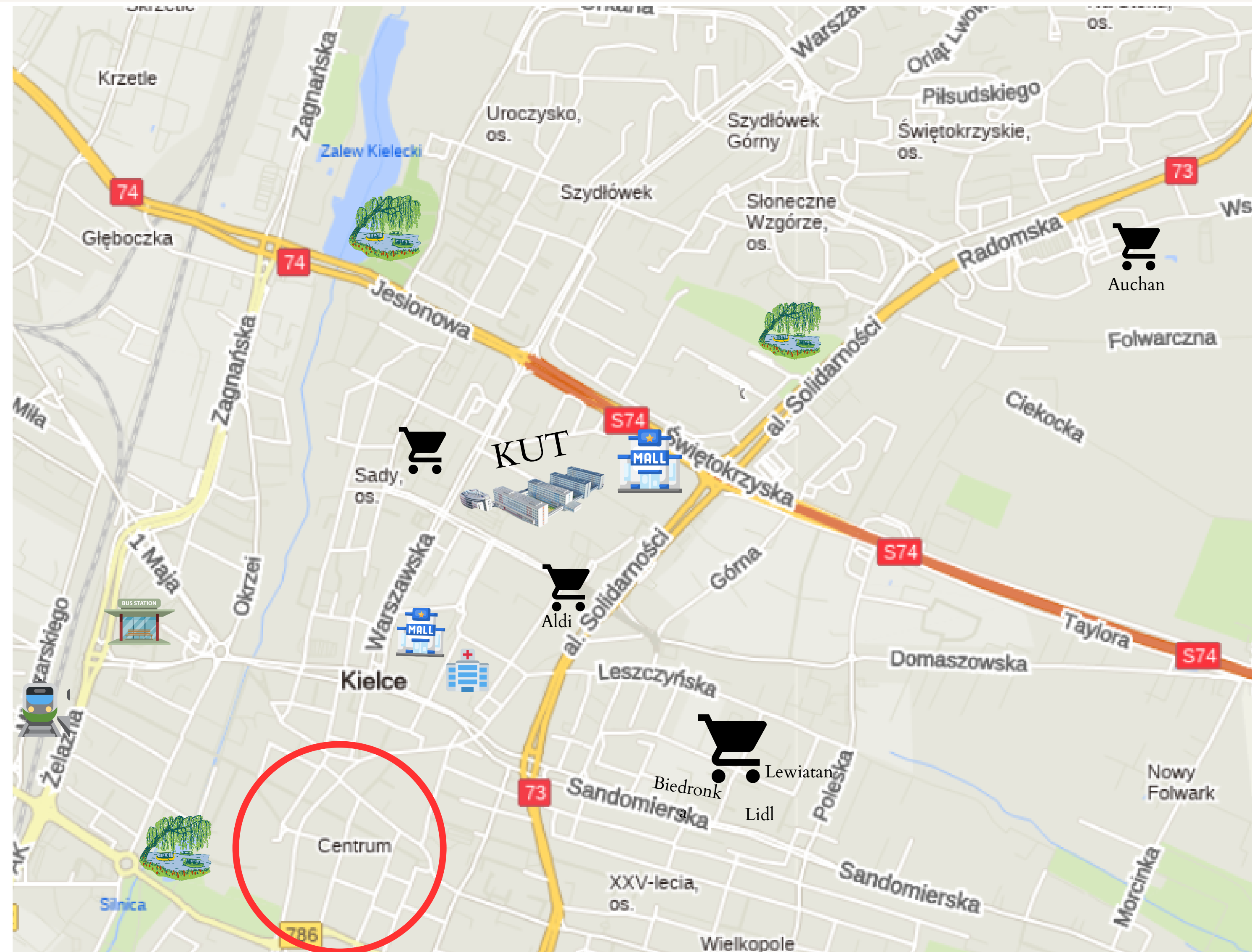
# SPRING/ SUMMER/ AUTUMN ACTIVITIES


- **riding a bike**, you can borrow a city bike available at almost each bus stop.  
All you need to do is download the app and ride as far as your legs allow you :)
- **go cart**
  - E1GOKART (ul. Batalionów Chłopskich 50e, 25-671 Kielce)
  - Crazy Cart Kielce (ul. Rolna 6, 25-001 Kielce)
- **lake swimming**
  - Zalew Kielecki
  - Cedzyna
  - Borków
  - Rejów
  - Sielpia
  - Chańcza
- **sightseeing** - castles, cathedrals, museum
  - History of Kielce (ul. Leonarda 4, 25-303 Kielce)
  - National Museum (plac Zamkowy 1, 25-001 Kielce)
  - Museum of Toys and Play (plac Wolności 2, 25-367 Kielce)
  - The Kielce Countryside Museum (Jana Pawła II 6, 25-001 Kielce)
  - Ethnographic Park in Tokarnia (Tokarnia 303, 26-060 Chęciny)
  - The Royal Castle (Małogoska 7, 26-060 Chęciny)
  - Sandomierz, The Royal City and Castle (Zamkowa 12, 27-600 Sandomierz)
- **botanical garden**, ul. Jagiellońska 78, 25-734 Kielce
- **rope park**, ul. Szczepaniaka 40, Kielce
- **ziplining**, in the Kadzielnia reserve (al. Legionów, 25-001 Kielce)
- **jurapark**, ul. Bałtów 8a, 27-423 Bałtów
- **miniature park**, SABAT KRAJNO (Krajno-Zagórze 43c, 26-008 Krajno-Zagórze)
- **oceanics, miniature park and Toyland**, ul. Laskowa 95, 26-050 Zagnańsk





# THE KIELCE UNIVERSITY OF TECHNOLOGY AND ITS NEIGHBOURHOOD



-  Shopping centre (also grocery store)
-  Hospital
-  Grocery store
-  Railway station
-  Bus station
-  City centre (restaurants, pubs, cafe, etc.)
-  Parks

# PLACE WORTH VISITING IN AND NEXT TO KIELCE



Ślichowice Reserve

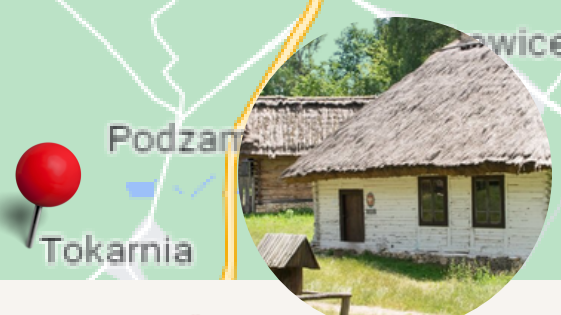
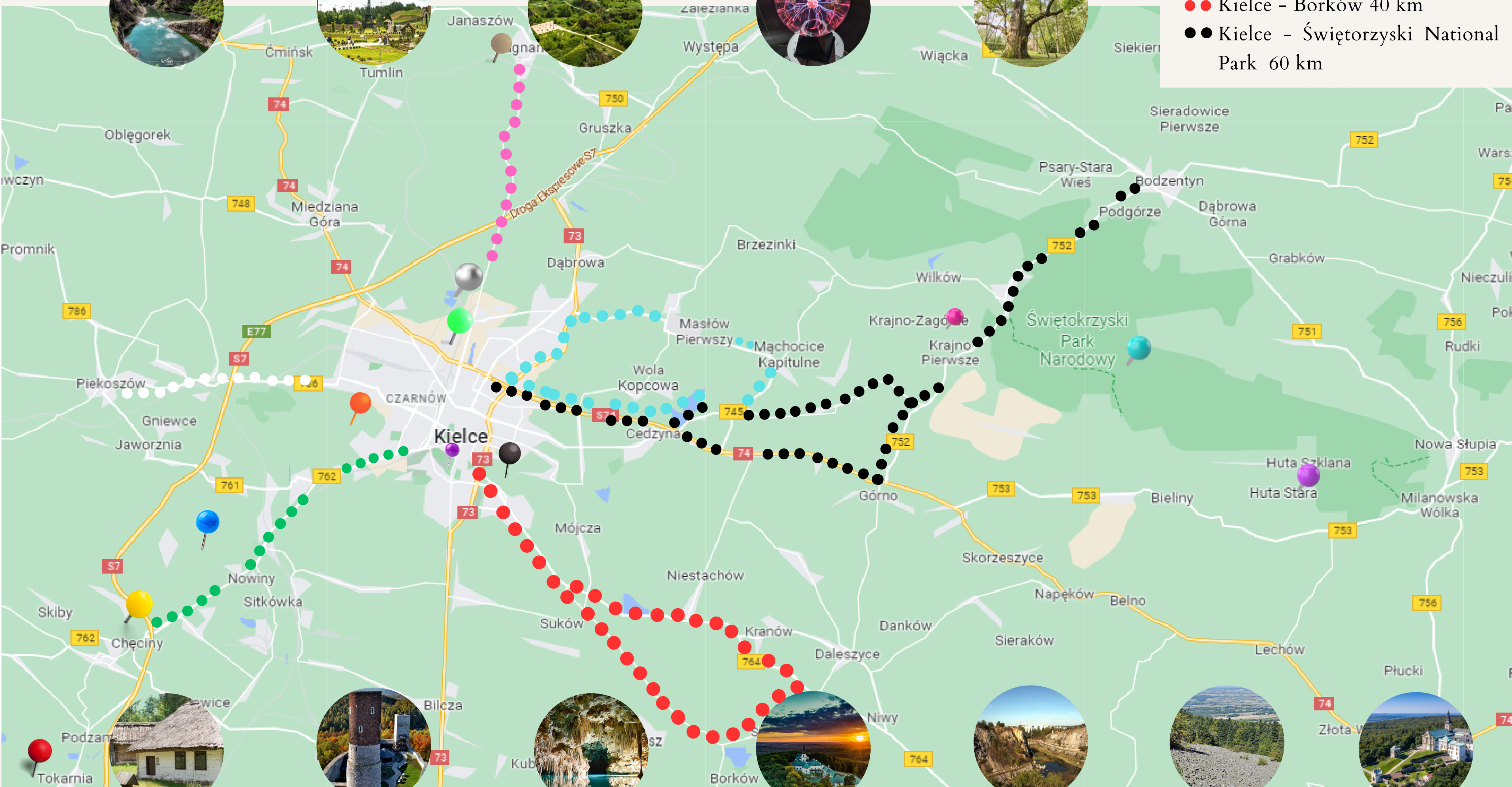
Krajno Miniature PARK

Wietrznia Geonature Centre

Energy Science Centre

Zagnańsk Oak tree Bartek

- Kielce - Mąchoćice 25 km
- Kielce - Zagnańsk 28km
- Kielce - Chęciny 30km
- Kielce - Piekoszów 30km
- Kielce - Borków 40 km
- Kielce - Świętokrzyski National Park 60 km



Tokarnia Heritage Park



Chęciny Royal Castle



Chęciny The Cave Raj



Karczówka Monastery and Reserve



Kielce Kadzielnia Reserve



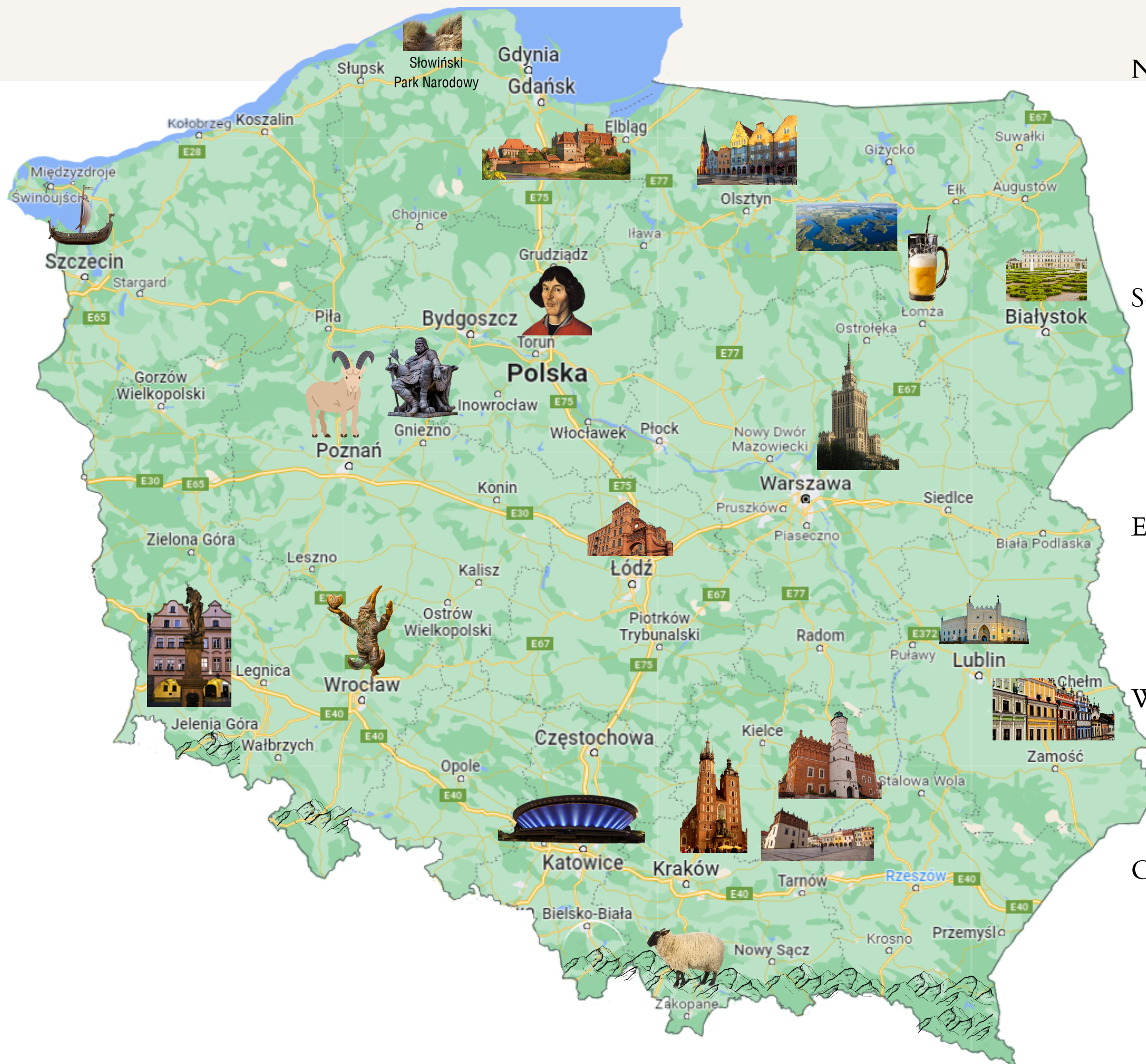
Świętokrzyski National Park



Holly Cross

# IF YOU WOULD LIKE TO EXPLORE POLAND EVEN MORE

The country has many vibrant cities with splendid heritage, unique history, mouthwatering cuisine, and stunning architecture. Moreover, Poland surprises visitors from all over the world with many attractions and landmarks. As there is too much to describe, here is only a short description of what are those cities famous for.



## North:

- **Gdańsk** marine city with a turbulent history
- **Słowiński Park Narodowy** (National Park) calm beaches, clean sand, dunes,
- **Olsztyn** city of 16 lakes and a very long history
- **Mazury** a picturesque hilly terrain covered with forests
- **Malbork** city established in the 13th century and its famous Teutonic Knight's Castle

## South:

- **Katowice** host of many cultural and sports events
- **Sandomierz** called also as the royal city
- **Kraków and Auschwitz** where the present meets past
- **Tarnów** the pearl of the renaissance, a city with picturesque landscapes
- **Zakopane** called as winter capital city of Poland, well known for individual architecture, cuisine, and culture,

## East:

- **Łomża** famous for dolls and "łomzing", both refer to the beer *Łomża*
- **Lublin** a city where the awareness of history inspires the future
- **Kazimierz Dolny** renaissance houses and castle, gorges
- **Zamość** famous for its colorful city center, combines history culture, and art

## West:

- **Szczecin** medieval churches, settlements and monuments of rural construction, Castle of the Pomeranian Dukes
- **Wrocław** associated with the dwarfs located in the city center
- **Jelenia Góra** the heart of the Karkonosze mountains,
- **Poznań** beautiful renaissance town hall, legendary billy goats

## Center:

- **Warszawa** capital city placed on the Unesco heritage list
- **Łódź** industrial city with the longest commercial street in Europe
- **Gniezno** the first capital city of Poland & **Biskupin** ancient settlement
- **Toruń** - the city where Nicolaus Copernicus was born, also famous for the gingerbread

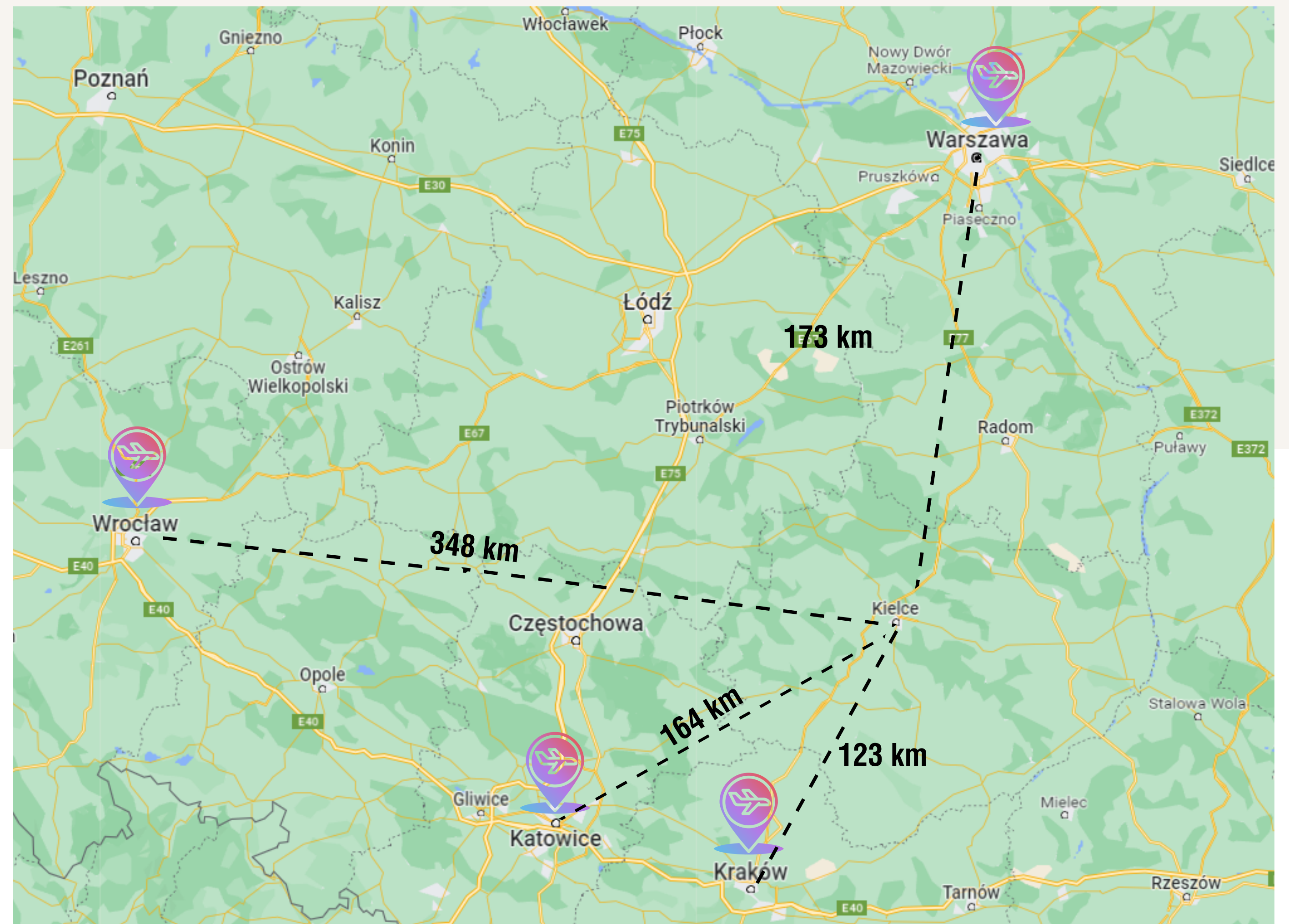
# ANOTHER ADVANTAGE OF KIELCE: LOCATED BETWEEN THE BIGGEST CITIES

Rail travels are the most popular among young people as the railway stations are usually located near the city center and have a good local transportation system.

A good connection of Kielce with the biggest cities of Poland creates an opportunity to travel across the country and Europe.

Once tired of a daily routine students of KUT can go for a city break easily.

Thanks to the student ID, the cost of a reduced train or bus ticket is very low.



# COSTS OF LIVING

Poland is a country where the cost of living is lower than in other EU countries. The average costs are different in each city.

## SAMPLE OF EXPENDITURES PER MONTH



Dormitory: 90-100 €



Grocery: 180-400€



Intercity travel: 2-20€  
The cheapest travels can be done with student ID which gives you discount



### Activities/fun:

- Entrance tickets (museum, swimming pool, etc): 3-7€
- Bowling/go cart 10-20€
- Gym membership: 20-50€



### Night life:

- Club ticket entrance: 5-7€
- Alcohol: 2-7€
- Eating out: 3-5€

# RESTRICTIONS

Remember that while being in another country, you need to know and apply the law of the foreign country.

In Poland, persons aged 18 or above can buy and drink alcohol regardless of its percentage content and cigarettes.



It is not allowed to consume alcohol outside designated premises - bars, restaurants, and beer gardens and also the fees are expensive.

Smoking in public places such as bus stops - is forbidden.



It is permitted to smoke only in designated smoking areas in restaurants.

Entrance to nightclubs is allowed to people over 18 years of age although there are also clubs where you have to be over 21.



While driving a car, remember to get to know the rules and limitations, which can be different from those applied in your country.



**Ignorantia iuris nocet - ignorance of law is harmful**

# POLISH CUISINE



Obwarzanek krakowski



Kluski śląskie

Due to Poland's history, Polish cuisine has evolved over the centuries to be very eclectic, and it shares many similarities with other regional cuisines. Polish-styled cooking in other cultures is often referred to as à la polonaise.

Generally, a typical Polish dish contains meat (especially pork or chicken), vegetables, spices, and herbs. It is also popular to use various kinds of noodles, cereals and grains.

Traditional dinner contains 3 courses, at the beginning, some kind of soup is served (the most popular is rosół - broth, zupa pomidorowa - tomato soup or zupa grzybowa - mushroom soup). The main course usually includes meat (ie. roast, breaded pork, chicken), a salad and potatoes or groat. As a conclusion of traditional dinner there is cake, the most popular is sernik - cheesecake, makowiec - poppy seed pastry, napoleonka - cream pie or szarlotka - apple pie.

## Podhale cuisine

*oscypek and bundz* (smoked sheep cheese), *bombolki* (pancakes drizzled with honey), *moskoli* (oatmeal pancakes), *góral tea* (tea with alcohol)

## Lesser Poland cuisine

*kiełbasa krakowska* (a type of sausage), *obwarzanki krakowskie* (bagels), *zapiekanek* (baked sandwiches), *napoleonka* (cream pie) well-known as a favourite cake from hometown of John Paul II (Wadowice)

## Podlasie cuisine

cuisine based on potatoes, *baba ziemniaczana* (potato casserole), *kiszka ziemniaczana* (casserole of potatoes and onion in pork bowel), *chłodnik* (cold beetroot soup), *cebularz* (flatbread topped with onion and poppy seeds), *sękacz* (biscuit cake baked in the open flames)

## Mazovian cuisine

*wuzetka* (chocolate sponge and cream pie), *ptasie mleczko* (marshmallow covered with chocolate)

## Warmia and Mazury cuisine

mixed with Lithuanian and Ukrainian cuisine, *czarnina* (black soup made of broth and duck's blood), *żur* (soup with eggs and sausages)

## Greater Poland cuisine

*pyzy z mięsem lub owocami* (potato dumplings with meat or fruit), *placki ziemniaczane* (greasy potato pancakes), *rogale świętomarcińskie* (croissants with dried fruits)

## Silesian cuisine

*karminadle* (a kind of meatballs), *mozgoł* (potatoes and cabbage mashed with lard), *kluski śląskie* (dumplings with a hole)

# HOW TO GET TO THE KIELCE UNIVERSITY OF TECHNOLOGY



al. Tysiąclecia Państwa Polskiego 7  
25-314 Kielce  
POLAND

If you came to Poland by an airplane, you can search for bus or train connection to Kielce.

## Train and bus schedule:

<https://www.e-podroznik.pl>

## Train schedule:

<https://koleo.pl/>

## Bus schedule:

<https://www.flixbus.pl/>

## Once in Kielce

train station address: plac Niepodległości 1, 25-560 Kielce

bus station address: ul. Czarnowska 12, 25-504 Kielce

the closest to the University bus stops: **Warszawska Politechnika**

**Al. Solidarności Galeria Echo**

**Al. Solidarności / Al. Tysiąclecia PP**

The distance between the University and the train (and also the bus) station is 2-2,5 km. Once take off the train, you can:

- take the bus,
- get a cab / bolt
- walk

To move around the city easily, you can download app:



Jakdojade



myBus



Bolt

## CONTACT DETAILS



Politechnika Świętokrzyska  
Kielce University of Technology



KIELCE UNIVERSITY OF TECHNOLOGY  
Al. TYSIĄCLECIA PAŃSTWA POLSKIEGO 7  
25-314 KIELCE  
POLAND



DEPARTMENT OF INTERNATIONAL COOPERATION  
BUILDING C, ROOMS 4.09, 4.20, 4.21



+ 48 41 34 24 789, +48 41 34 24 773



international@tu.kielce.pl  
erasmus@tu.kielce.pl



kut\_international



<https://international.tu.kielce.pl/>  
<https://erasmus.tu.kielce.pl/>